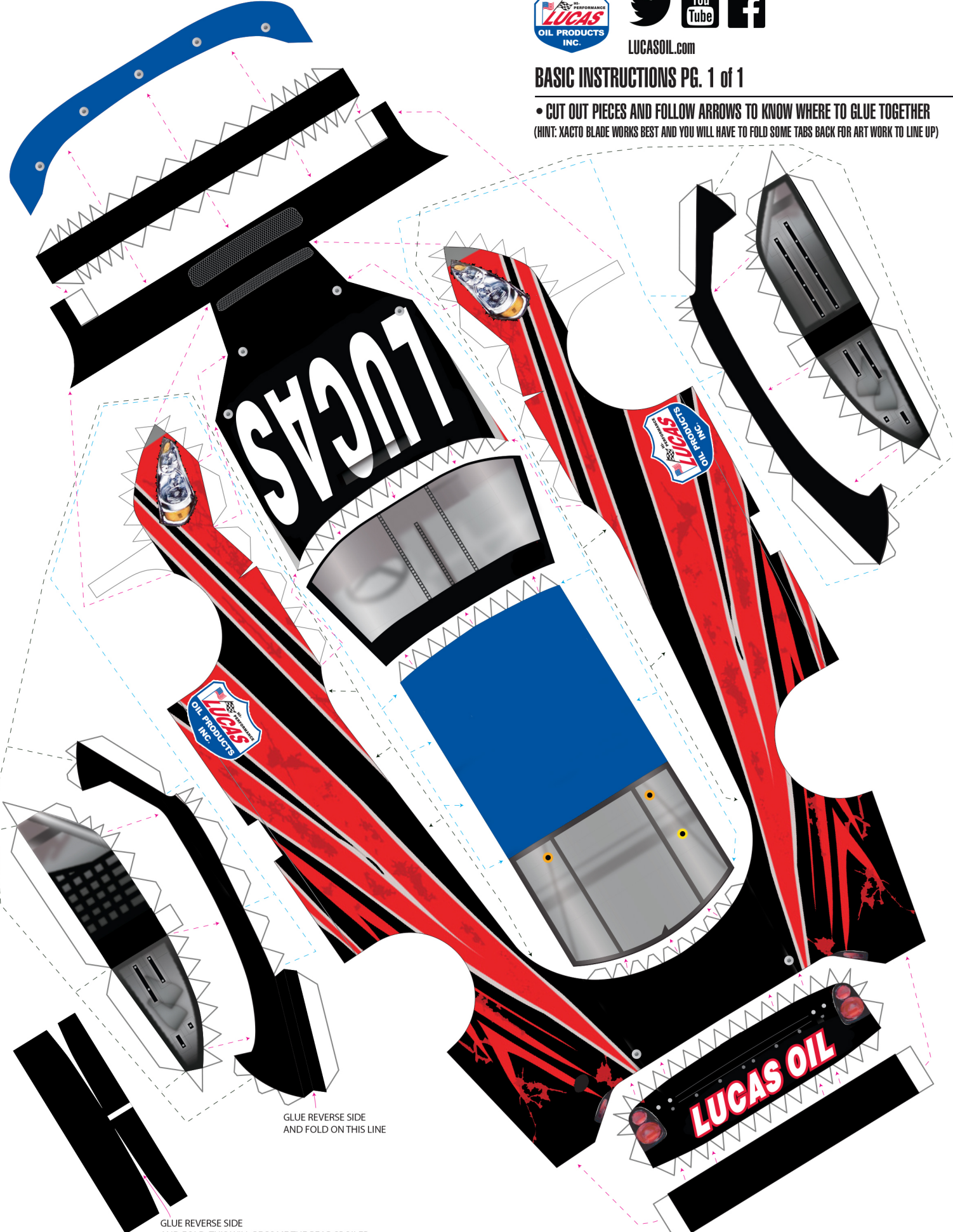




LUCASOIL.com

BASIC INSTRUCTIONS PG. 1 of 1

• CUT OUT PIECES AND FOLLOW ARROWS TO KNOW WHERE TO GLUE TOGETHER
(HINT: XACTO BLADE WORKS BEST AND YOU WILL HAVE TO FOLD SOME TABS BACK FOR ART WORK TO LINE UP)



GLUE REVERSE SIDE AND FOLD ON THIS LINE

GLUE REVERSE SIDE AND FOLD, THIS WILL BECOME THE REAR SPOILER

CREATE A CYLINDER

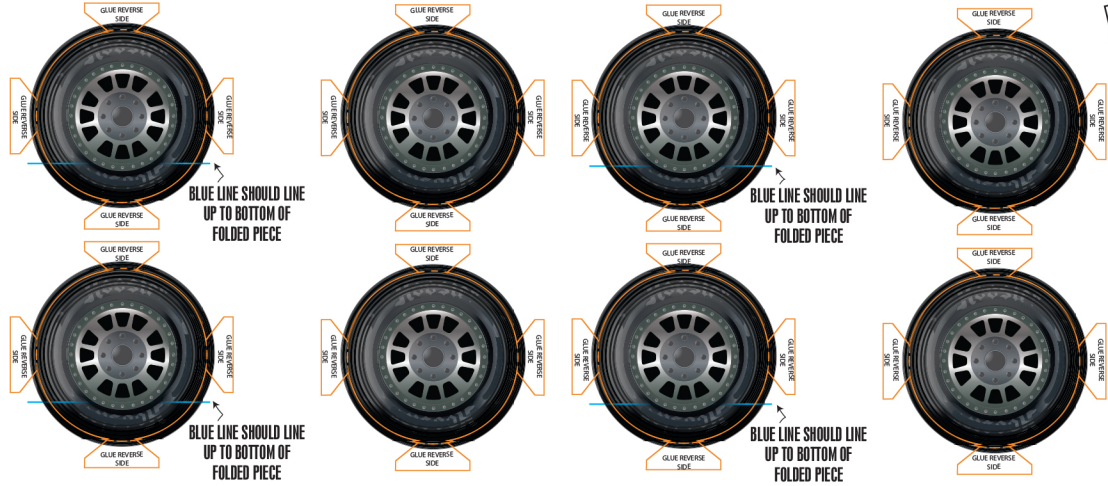
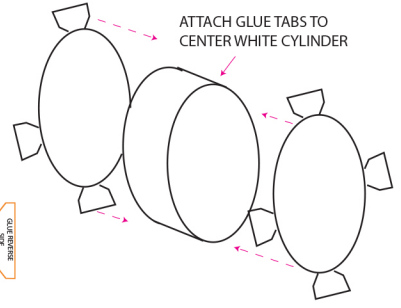


LUCASOIL.com

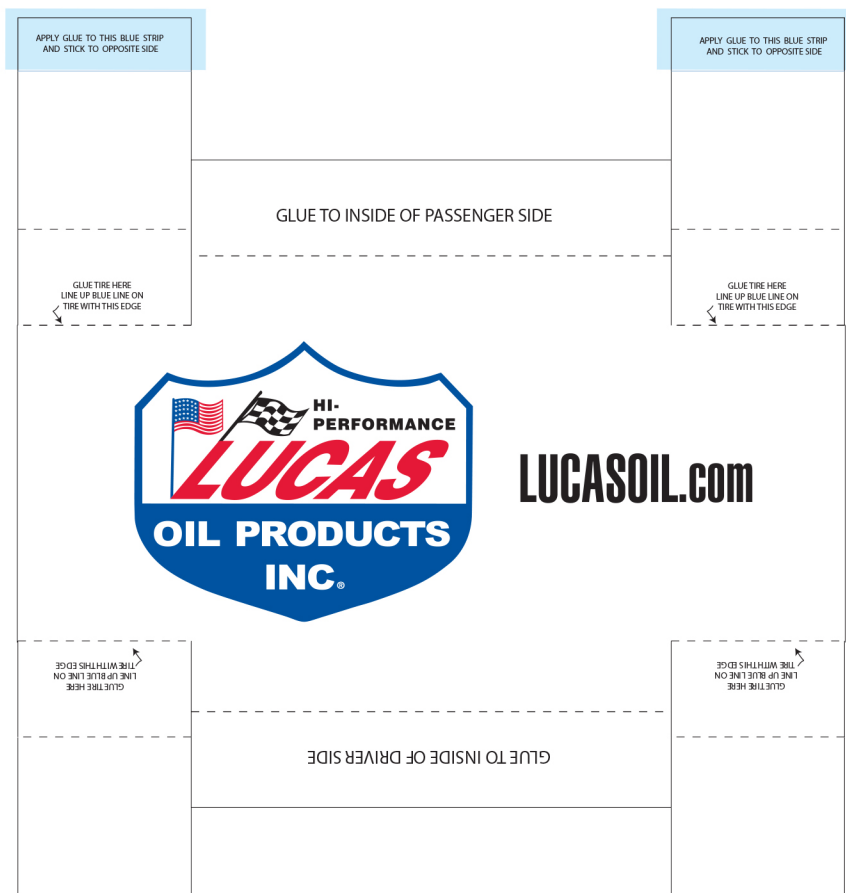
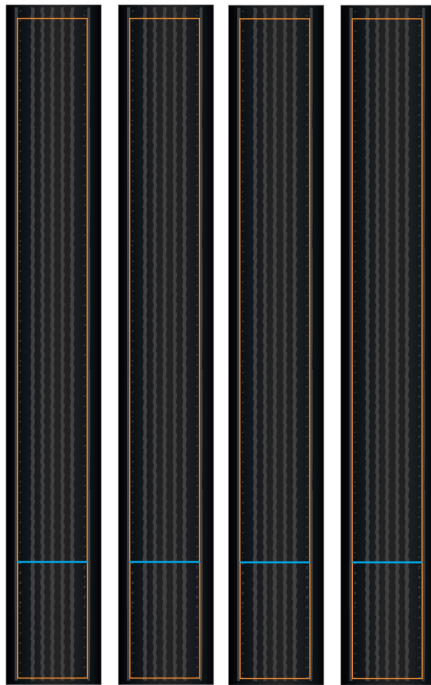
BASIC INSTRUCTIONS PG. 1 of 1

• CUT OUT ALL PIECE AND THEN GLUE WHITE TABS TO NEXT CORRESPONDING PIECE

	GLUE
	GLUE
	GLUE
	GLUE



THESE GLUE ON LAST TO COVER ALL THE TABS



FOLD BACK ON ALL DOTTED LINES. ONCE THIS PIECE IS FOLDED AND GLUE, GLUE TO ASSEMBLED CAR SHELL. THIS WILL BECOME THE SUB FRAME OF THE CAR.

ONCE THIS IS GLUED INTO THE CAR SHELL GLUE THE TIRES ON TO THIS PIECE.